

Follow HARUG Online!

Houston Area Revit User Group

<http://www.harug.org/>

<http://hrug.wordpress.com/>

Houston Revit User Group
a place for discussion of all things Revit

HOME ABOUT

February 2012
M T W T F S S
1 2 3 4 5
6 7 8 9 10 11 12
13 14 15 16 17 18 19
20 21 22 23 24 25 26
27 28 29
» Jan

Recent Comments

Philp on January 2011 Meeting

Philp on October Meeting

Philp on About

Cesar on About

Jose Vera on About

Search

February 8th 2012 Meeting
Posted by Donald Franklin on February 5, 2012.
Beginning in March 2012, HARUG Meetings will be held on the **SECOND** Tuesday of each month.
Find more information about the Houston-Area Revit Users Group on our website: <http://www.harug.org/>
Please make plans to join us at the February Houston-Area Revit Users Group Meeting.

Revit Families – Overview and Basics
When: Wednesday, February 8th, 2012
Time: 6:00 pm - 7:30 pm

Location:
PG&L
3131 Briarpark, Suite 200
Houston, Texas 77042
[Google Map](#) | [Bing Map](#) | [MapQuest Map](#)
(in west Houston, in the Westchase District, 2 blocks east of Seelway St, between Westheimer Rd. and Richmond Ave.)

Archives

February 2012 (1)
January 2012 (1)
December 2011 (1)
November 2011 (1)
October 2011 (1)
September 2011 (1)
August 2011 (1)
July 2011 (1)
June 2011 (1)
May 2011 (1)
April 2011 (1)
January 2011 (1)
October 2010 (1)
August 2010 (2)
June 2010 (1)
May 2010 (2)
March 2010 (1)
January 2010 (1)
October 2009 (1)
September 2009 (1)

Links

AUGI
 Autodesk



WELCOME ABOUT MEETINGS CALENDAR DISCUSSIONS MEMBERS LINKS



It's true, Houston-area Revit users group has a home on the world wide web! We are still in the process of developing/designing the site, however the emails are fully functional and we have a team of dedicated officers working to make this a truly awesome community.
Check back often for updates and information about upcoming meetings.

Sponsors



Welcome...

Be part of a local community of Revit and BIM application users that range from beginner to expert skill levels. Get the most out of your software with access to our knowledge network. Since 2002, the Houston Area Revit Users Group (HARUG) has been the main resource in the area for Revit Users, AutoCAD Architecture (previously Architectural Desktop), AutoCAD and other BIM related tools.

The Houston Area Revit User Group meets on the second Wednesday of each month.

Houston Area Revit User Group

Announcements

Coming Soon ...

March 6, 2012 (Tuesday) at 6:00 pm

■ Revit Family Creation - Hands-On

■ Presenter:

Total CAD Systems

■ Location:

WHR Architects

1111 Louisiana Street

27th Floor

Downtown, Houston (MAP)

CALENDAR

WELCOME ABOUT MEETINGS CALENDAR DISCUSSIONS MEMBERS LINKS

← March 2012 →

Sunday	Monday	Tuesday	Wednesday	Thursday	Friday	Saturday
26	27	28	29	1	2	3
4	5	6:00 HARUG Monthly Meeting	7	8	9	10
11	12	13	14	15	16	17
18	19	20	21	22	23	24
25	26	27	28	29	30	31

Legend:
● HARUG
Printer Friendly
Preferences
Subscribe | Download

Jump to
Jump to
HARUG
2012
March 2012
Feb 26 - Mar 3

Pick multiples:
HARUG
US Holidays
iCal-EXDrB-sa-sxsw@rolle

Go

February 2012
S M T W T F S
29 30 31 1 2 3 4
5 6 7 8 9 10 11
12 13 14 15 16 17 18
19 20 21 22 23 24 25
26 27 28 29 1 2 3

April 2012
S M T W T F S
1 2 3 4 5 6 7
8 9 10 11 12 13 14
15 16 17 18 19 20 21
22 23 24 25 26 27 28
29 30 1 2 3 4 5

NOTE: While Total CAD will have several laptops available, you are encouraged to bring your own laptop (please make sure you have the Revit software available on your own laptop before the meeting).

2012 HARUG Meetings

Meeting on the second Tuesday of each Month (locations in parenthesis)

March Revit Family Creation: Hands-on (WHR)

April Schedules/Quantities/Management/Cost Est. (AIA [?])

May Cross Discipline:
Navisworks/Coordination/Copy Monitor (SSR [?])

June New Features (Morris [?])

July Social (City Centre [?])

August BIM for Construction/BIM Cave (McCarthy [?])

September Advanced Visibility Workflows:
Phasing/Design Options/Filters (HOK)

October Advanced Stairs & Vertical Circulation (WPM [?])

November Rendering in Revit/Max (location pending [?])

December "Show off your renderings" Social (Champps Houston Uptown)



Revit Families Overview and Basics

HARUG Monthly Meeting
February 8, 2012

Presented by Donald Franklin, AIA

WHRARCHITECTS

Architecture with People in Mind®

Before we begin...

Please set your cell phones to silent or vibrate.

Thanks for your attendance
and participation!

Thanks to our sponsors...

Food and refreshments generously provided by:



Meeting space provided by:

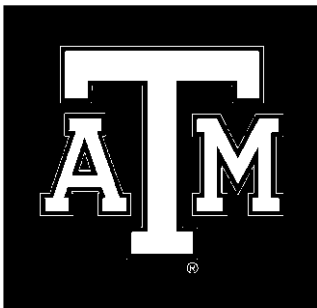


PGAL

Introductions

Donald Franklin, AIA
BIM/CAD Production Manager
Associate
WHR Architects, Inc.
dfranklin@whrarchitects.com

Texas A&M Aggie (Bach. E.D., M. Arch.)
Registered Architect (TX)
Autodesk Revit Architecture 2010 Certified Professional



Introductions

Who are you?

Name:

Company/Affiliation:

Position/Role:

Discipline:

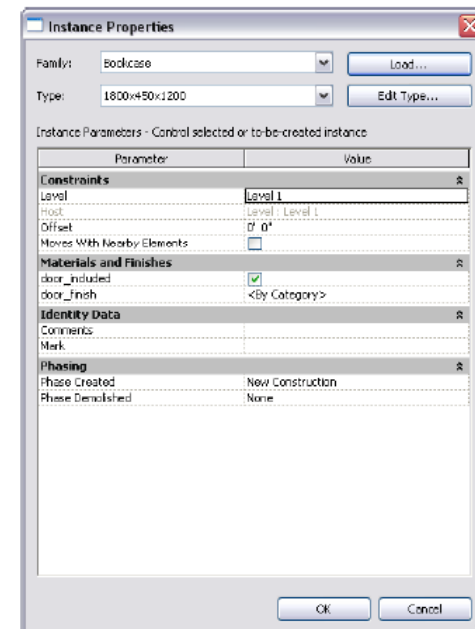
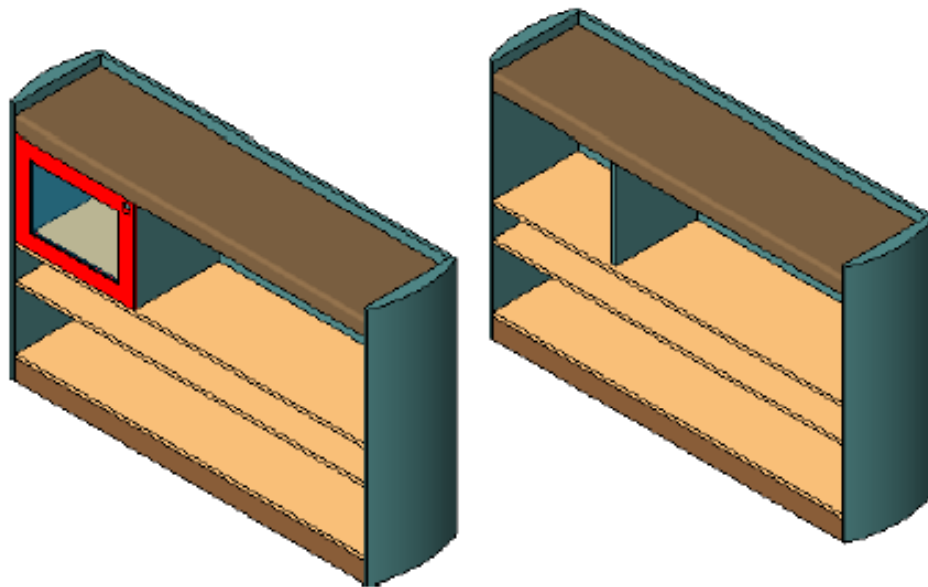
Architectural, Structural, MEP, Civil, Owner, Other?



What are Families?

A **Family** is a group of elements with a common set of properties, called **parameters**, and a related graphical representation.

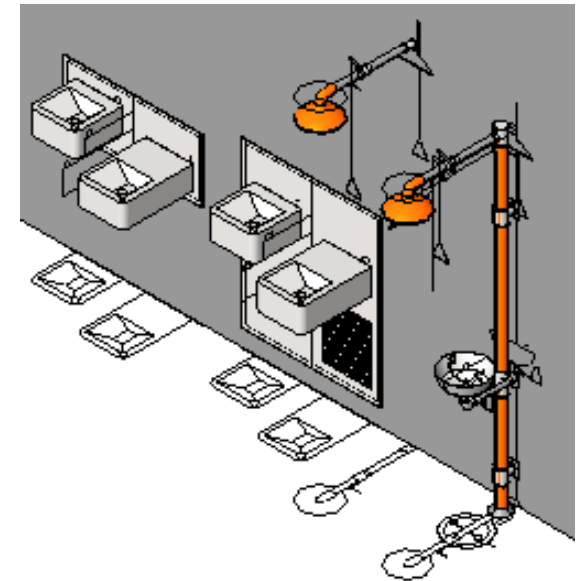
Different elements belonging to a family may have different values for some or all of their parameters, but the set of parameters (their names and meanings) is the same. These variations within the family are called **Family Types** (or **Types**).



Where to find Content?

The following are possible places to search when looking for Families and Components.

1. Your office standard content
2. Revit out-of-the-box content
(*Revit_Content\Libraries\US Imperial*)
3. Previous or similar projects
(Be sure to use "*Detach From Central*").
4. "Reputable" third-party sites
 - Autodesk Seek (<http://seek.autodesk.com>)
 - RevitCity (<http://www.RevitCity.com>)
 - Others?
6. Create a custom family or component.
7. Can anyone think of others?



Where to Find Content?

Out-of-the-box/downloads (Autodesk, Seek, RevitCity, etc.) vs. Custom

Watch for parametric geometry functionality, imported CAD information, excessive parametric data or values.

RevitCity

Home | Forums | Downloads | Gallery | News & Articles | Resources | Jobs | FAQ | Search | Join | Login

96 Users Online (53 Members): Show Users Online - Most ever was 428 - Mon, Nov 12, 2007 at 11:48:43 AM

CS1 MF04 Tree

- MasterFormat 04
 - 01 - General Requirements(51)
 - 02 - Existing Conditions(6)
 - 03 - Concrete(84)
 - 04 - Masonry(50)
 - 05 - Metals(196)
 - 06 - Wood, Plastics, & Composites(32)
 - 07 - Thermal & Moisture Protection(7)
 - 08 - Openings(1523)
 - 09 - Finishes(87)
 - 10 - Specialties(394)
 - 11 - Equipment(1038)
 - 12 - Furnishings(2710)
 - 13 - Special Construction(56)
 - 14 - Conveying Equipment(40)
 - 21 - Fire Suppression(30)
 - 22 - Plumbing(854)
 - 22 00 00 - Plumbing(8)
 - 22 10 00 - Plumbing Piping & Pumping(1)
 - 22 30 00 - Plumbing Equipment(1)
 - 22 40 00 - Plumbing Fixtures(613)
 - 23 - Heating, Ventilating, & Air-Conditioning(1)
 - 26 - Electrical(801)
 - 27 - Communications(52)
 - 28 - Electronic Safety & Security(12)
 - 31 - Earthwork(17)
 - 32 - Exterior Improvements(466)
 - 33 - Utilities(32)
 - 34 - Transportation(471)

Objects

Object Name	Description	Downloads
Caroma Leda 2000 Toilet Suite	Caroma Leda 2000 Toilet Suite	4787 downloads
Ceiling Mounted Shower Head	This is a generic Place holder for a Ceiling mounted diverted shower head. NOTE: this is not modeled after any specific brand model and should be treated as such.	1323 downloads
CERAMIC DESIGN-Antaro Sink	On counter sink by Ceramic Design. Manufactured in Italy and distributed in North America by www.rest-agio.com . Download ceramic finish image files here .	524 downloads

Autodesk® Seek

Sign In | Join Now! | Demo | FAQ | Support Forum

Autodesk® Revit Architecture
United States Version

Select Country
United States

Revit Architecture - US > Plumbing Fixtures

Now showing 1-20 of 60 entries

Category	Item Name	Downloads
Annotations (53)	Bidet-3D Library Revit Architecture	2 RFA
Balusters (22)	Drinking Fountain-Barrier Free-3D Library Revit Architecture	2 RFA
Casework (1)	Drinking Fountain-Fully Recessed-3D Library Revit Architecture	2 RFA
Columns (9)	Drinking Fountain-Pedestal-3D Library Revit Architecture	2 RFA
Curtain Panel By Pattern (23)	Hot Tub Library Revit Architecture	2 RFA
Curtain Wall Panels (6)		
Doors (94)		
Electrical Fixtures (22)		
Entourage (8)		
Furniture (71)		
Furniture System (6)		
Imperial Templates (68)		
Instructional Files (1)		
Lighting Fixtures (40)		
Mass (15)		
Mechanical Equipment (13)		
Planting (6)		
Plumbing Fixtures (60)		
Profiles (33)		
Sample Files (8)		
Shared Parameter Files (7)		
Sustainable Design (10)		
Titleblocks (6)		
Windows (85)		

Three Primary Kinds of Families

SYSTEM FAMILIES

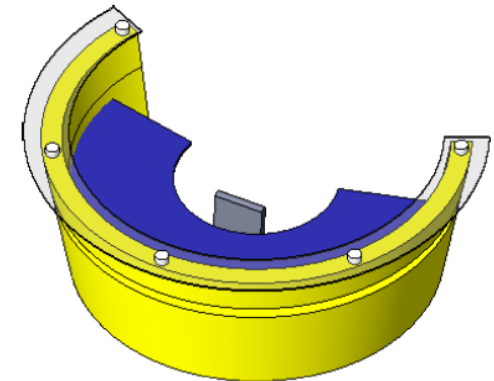
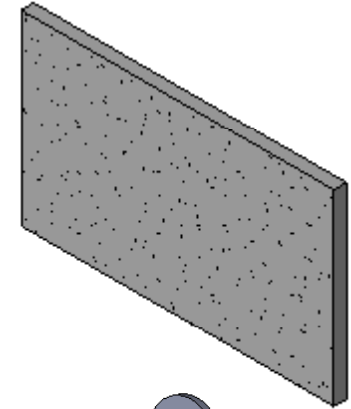
Components predefined in Revit
(Walls, Floors, Ceilings)

LOADABLE FAMILIES

Components that would usually be purchased,
delivered, and installed in and around a building
(Casework, Furniture, Doors, Windows)

IN-PLACE FAMILIES

Unique conditions specific to the current project;
(Reception desk, Fireplace, Slanted walls)

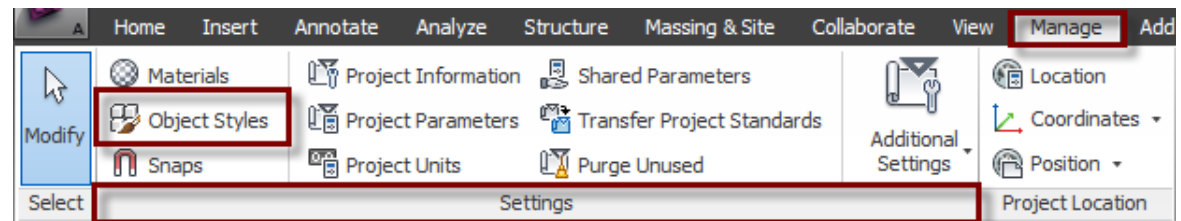


Cuttable / Non-cuttable

If a family is cuttable, it displays as "cut" when the cut plane (of a plan view) or the clipping plane (of sections and elevations) intersects that family. If the family is non-cuttable, it displays in "projection", whether it is intersected by the cut plane or not.

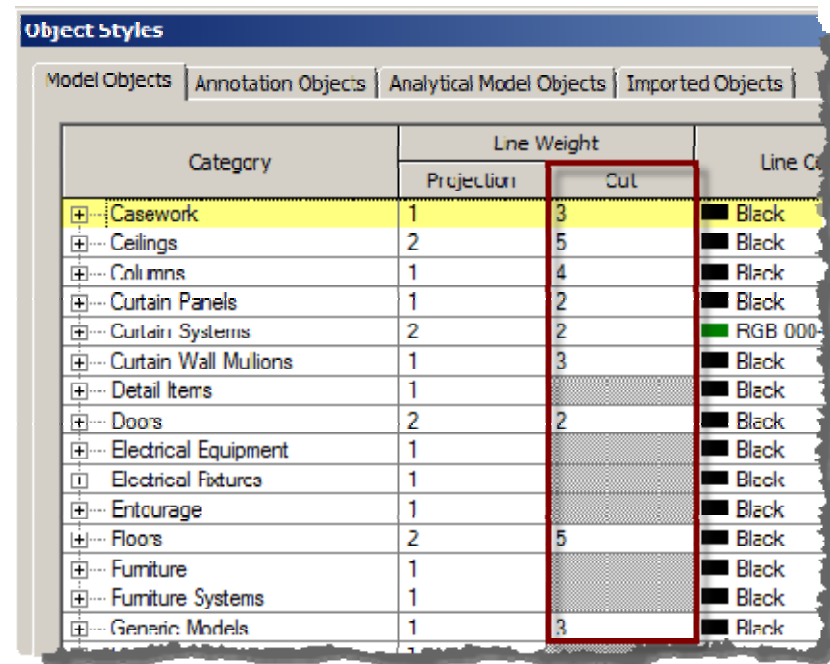
CUTTABLE

Doors, Windows, Casework, Generic Models, etc.



NON-CUTTABLE

Electrical Equipment, Furniture, Plantings, Plumbing Fixtures, etc.

A screenshot of the 'Object Styles' dialog box in Revit. The 'Model Objects' tab is selected. The table below shows various object categories and their line weights for 'Projection' and 'Cut' views. The 'Cut' column is highlighted with a red box.

Category	Line Weight		Line Color
	Projection	Cut	
Casework	1	3	Black
Ceilings	2	5	Black
Columns	1	4	Black
Curtain Panels	1	2	Black
Curtain Systems	2	2	RGB 000-
Curtain Wall Mullions	1	3	Black
Detail Items	1		Black
Doors	2	2	Black
Electrical Equipment	1		Black
Electrical Fixtures	1		Black
Encourage	1		Black
Floors	2	5	Black
Furniture	1		Black
Furniture Systems	1		Black
Generic Models	1	3	Black

The cut plane is typically at 4'-0" AFF.

Planning a Revit Model Family

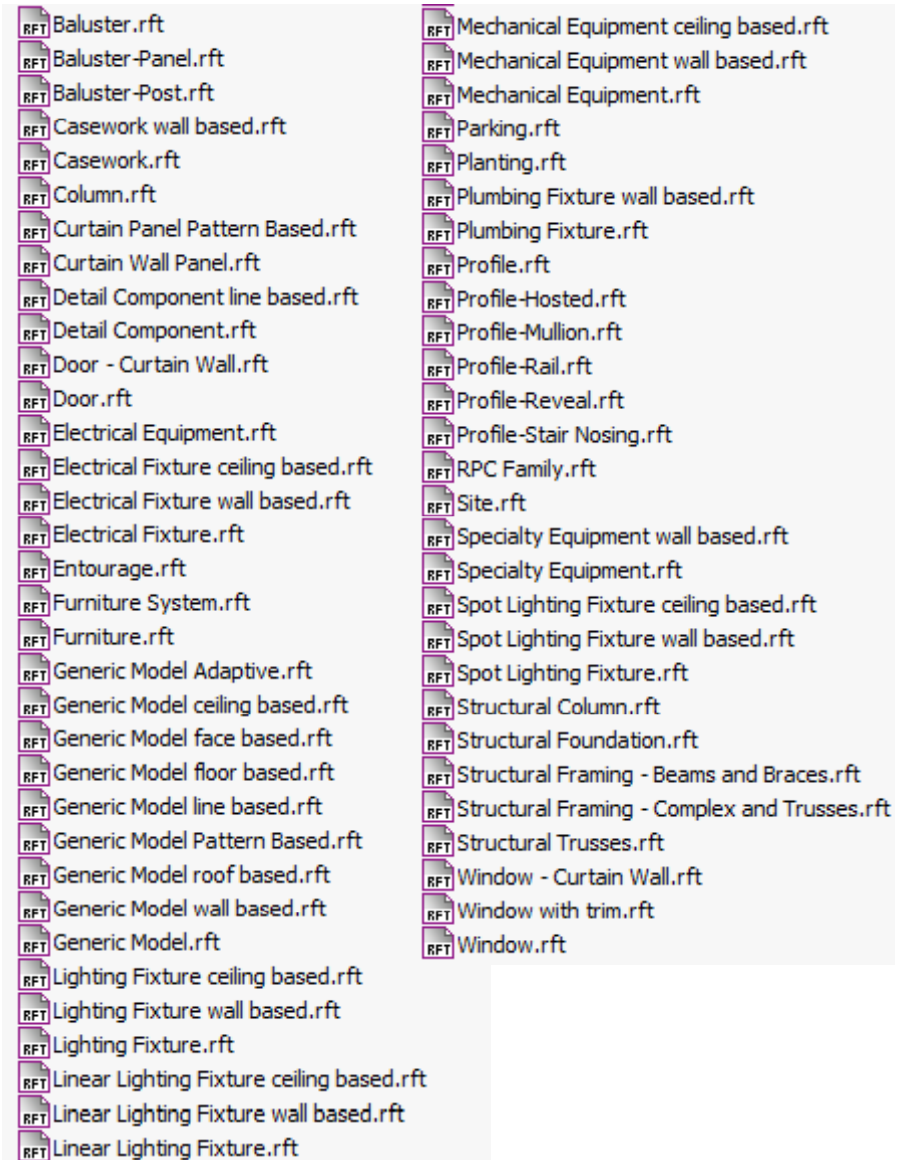
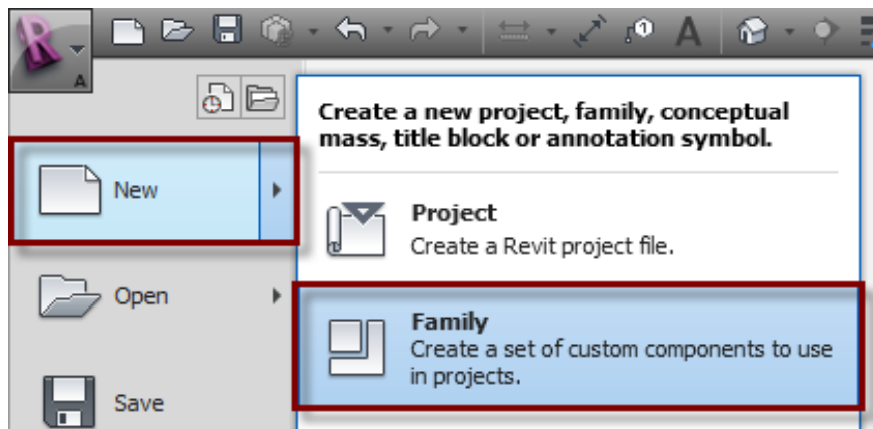
Before creating a family, careful planning should consider the **DESIGN INTENT vs. PERFORMANCE**

The "**design intent**" of the family may include these considerations:

- What are the **representations** that the family must contain (schematic, design development, construction documentation, high quality rendering)? How detailed must each representation be?
- Will the family need to accommodate multiple **sizes**?
- How should the family **display** in different views?
- Does this family require a **host**?
- How much **detail** should be modeled?
- What is the **origin point** of this family?

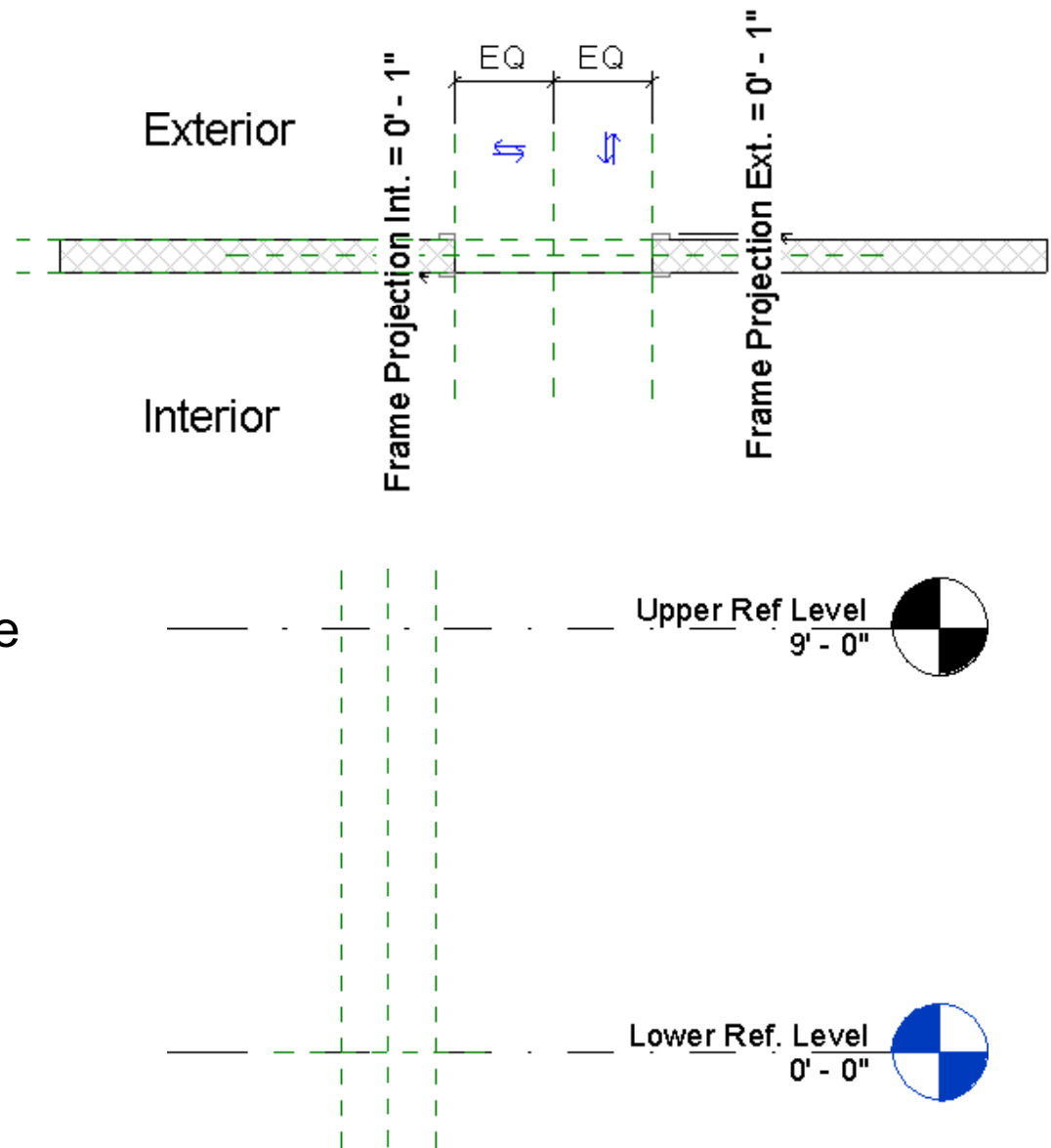
Family Templates (rft)

- Start by selecting the correct **Family Template**.



Family Templates (rte)

- Some templates have specific **parameters, controls**, etc., that make them work better.
- The "**Column**" template is only one with both a bottom AND top reference plane.



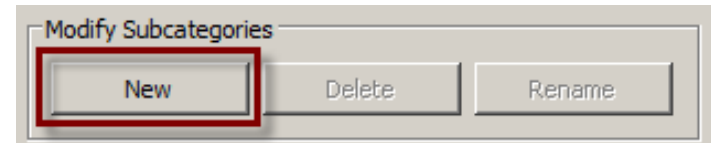
Family Templates (rte)

- The **Category** defines its top level of identification within the project environment / Project Browser (for example, Door, Window, or Casework). Categories are predefined in Revit software and cannot be created or changed by the user.
- Components can be assigned to a **Subcategory** within the family category. Subcategories are predefined in some families, but other "new" subcategories can be created in families as needed. (Refer to the [Revit Master Subcategory List.xls](#)).

Object Styles

Model Objects | Annotation Objects | Imported Objects

Category	Line Weight		Line Color
	Projection	Cut	
Doors	1	3	Black
Elevation Swing	1	1	Black
Frame/Mullion	2	3	Black
Glass	1	3	RGB 000-000-160
Hidden Lines	2	2	Blue
Opening	1	3	RGB 000-127-000
Panel	2	3	Black
Plan Swing	1	1	Black
Walls	2	2	Black
Common Edges	2	2	Black
Hidden Lines	2	2	Black

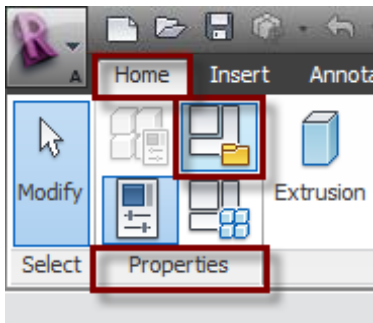


Additional Approved Subcategories

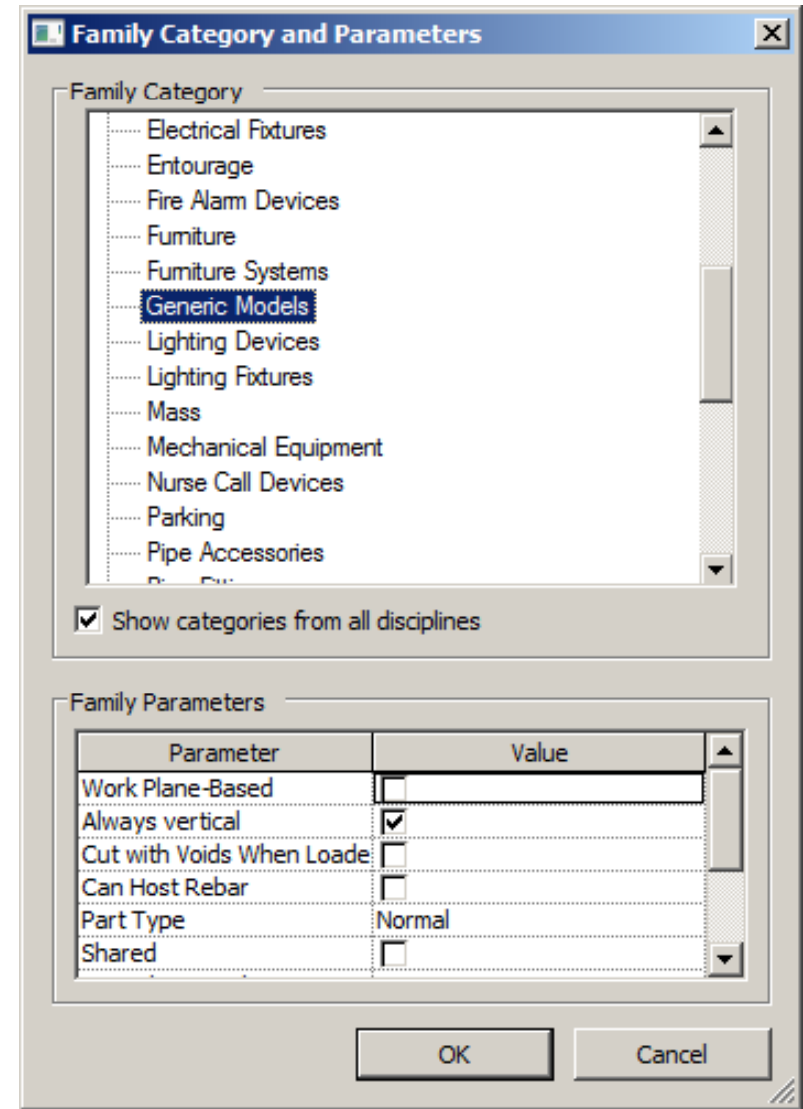
Category/Subcategory
Hardware
Muntin
Trim

Family Templates (rte)

- If you start with one category (such as "Generic Model") you can use "Family Category and Parameters" to change the category.

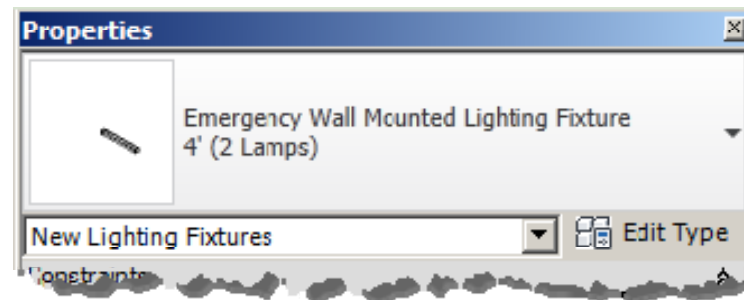


- Some templates do not allow you to change the category.



Naming a Revit Model Family

- Keep family file names as **short** as possible.
Family names must display in the Type Selector and in various dialogs.

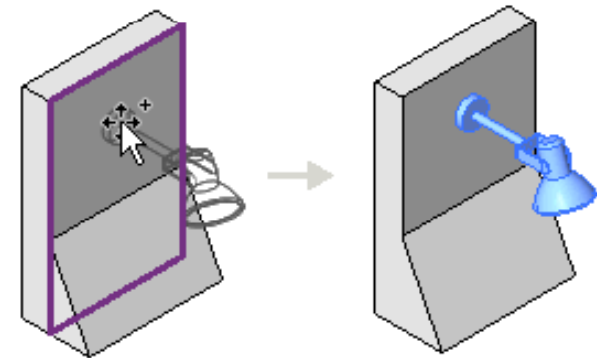


- Use "Title Case" for family names, as they are case sensitive.
- Do not use spaces between words in file names.
To separate words within an element, use the **underscore** character (_).

Hosted vs. Non-hosted

Hosted Family

- A **Host-based** family can be placed only if an element of its "host" type is present in the project.
 - Wall-based
 - Ceiling-based
 - Floor-based
 - Roof-based
- A **Line-based** template is used to create detail and model families that use a "2-pick" placement method.
- A **Face-based** template is preferred (required) for optimum model linking workflow.



Non-Hosted Family

- A **Non-hosted** family can be placed anywhere in a project.

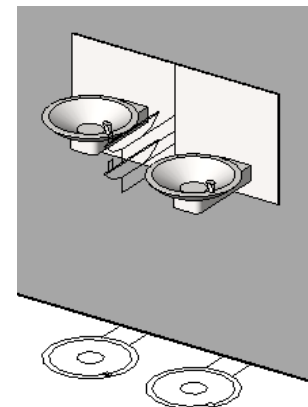
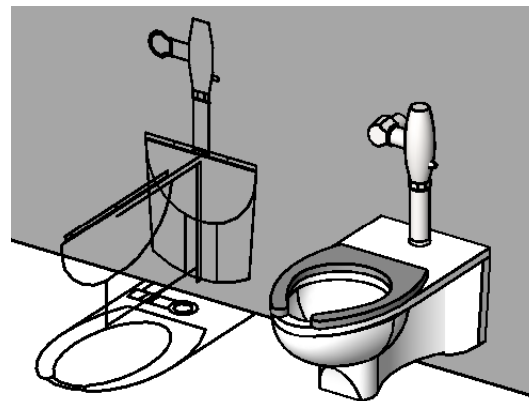
Visibility Control

- Define subcategories for the family to help control the visibility of the family geometry.

- Line Pattern
- Line Weight
- Line Color
- Material

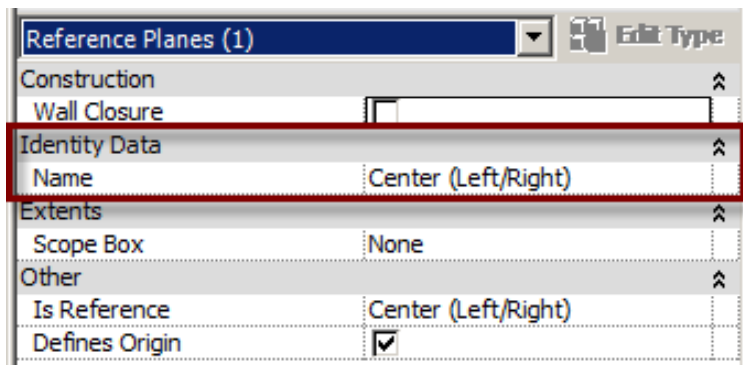
Category	Line Weight		Line Color	Line Pattern	Material
	Projection	Cut			
Doors	1	3	Black	Solid	
Elevation Swing	1	1	Black	Dash	
Frame/Mullion	2	3	Black	Solid	
Glass	1	3	RGB 000-000-160	Solid	Glass
Hidden Lines	2	2	Blue	Dash	
Opening	1	3	RGB 000-127-000	Solid	
Panel	2	3	Black	Solid	
Plan Swing	1	1	Black	Solid	
Walls	2	2	Black		Default Wall
Common Edges	2	2	Black		
Hidden Lines	2	2	Black	Dash	

- Use of symbolic lines rather than (solid) geometry.

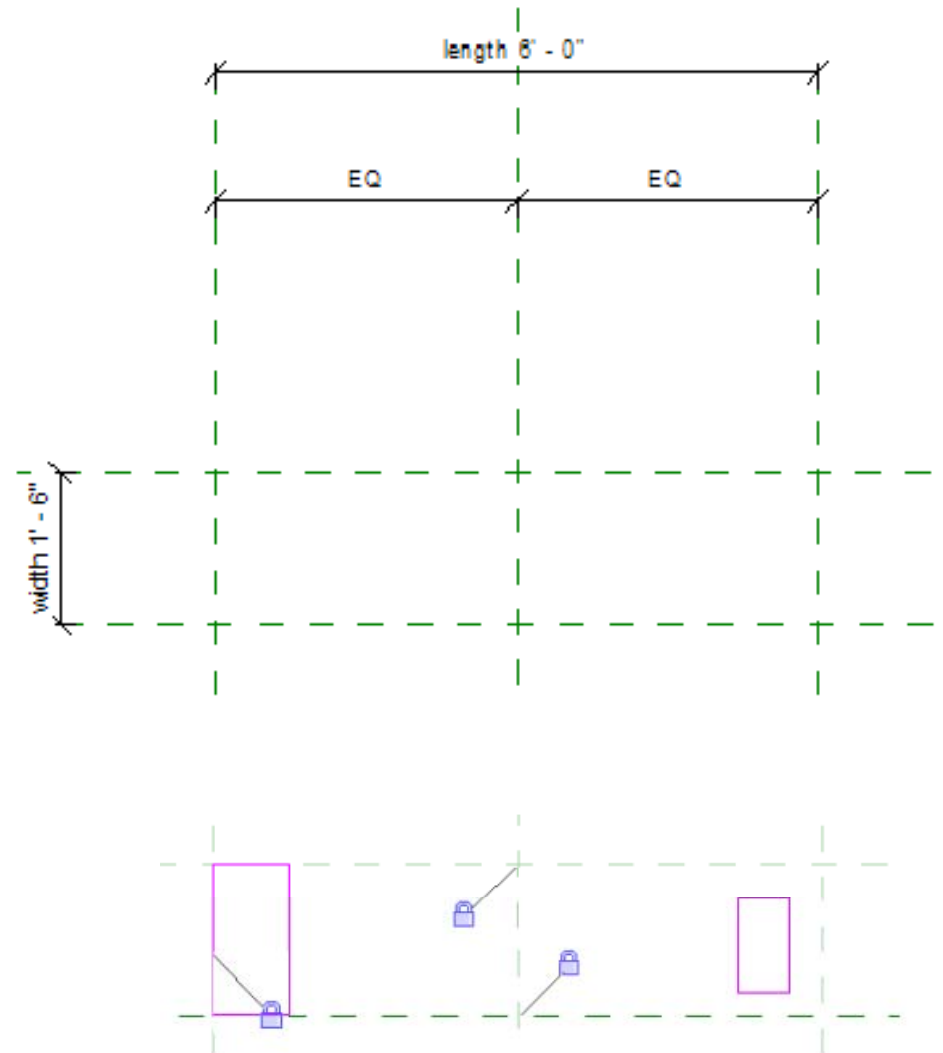


Reference Planes / Lines

- Plan the parametric relationships and create a family "skeleton" or reference planes / lines that features the main parametric relationships.
- Name your reference planes. This make the family much easier to edit in the future.

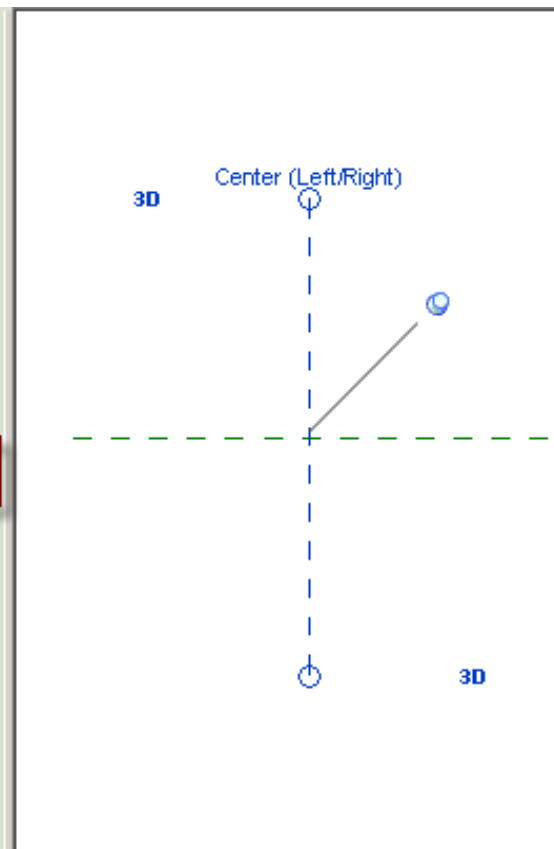
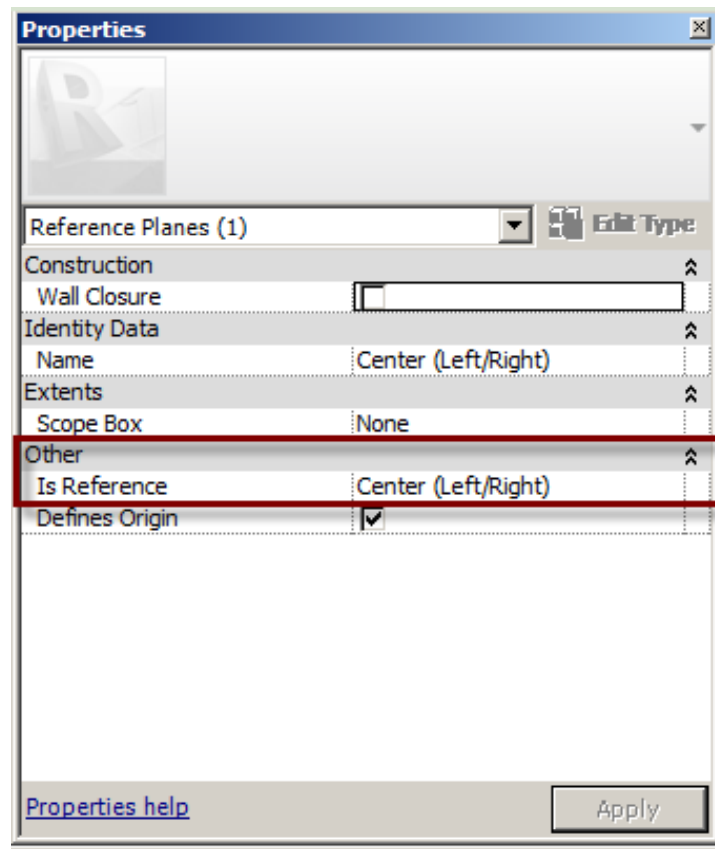


- Constrain the geometry to reference planes



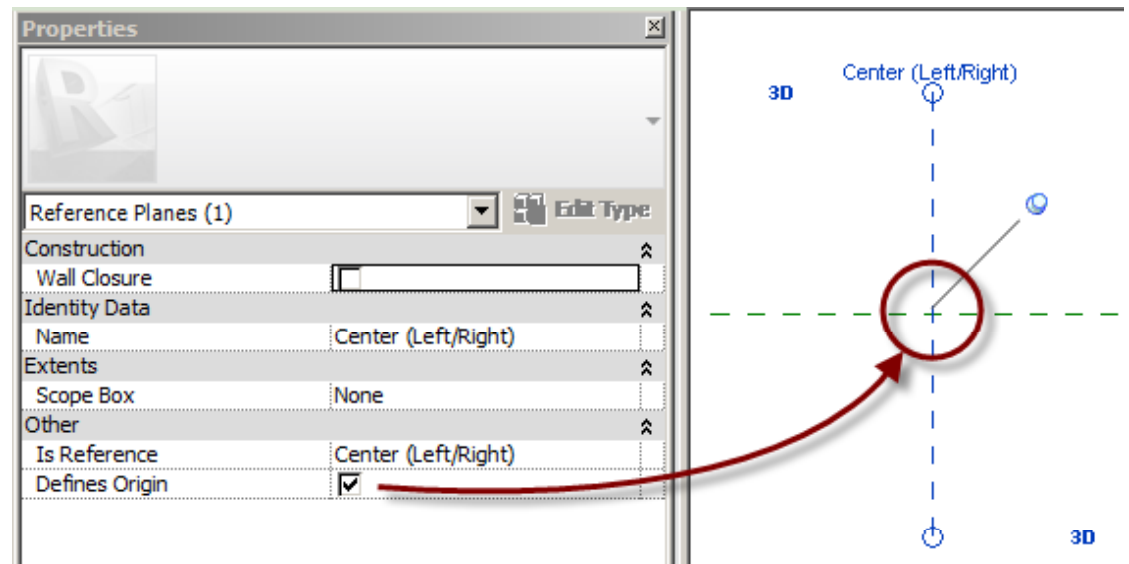
Reference Planes / Lines

- Reference plane priority ("Is Reference")
Specifies one or more particular reference planes in the family that you can consistently "dimension to" or "align to".
- "Is Reference" values:
 - Not a reference
 - Strong reference / Weak reference
 - Left
 - Center (Left/Right)
 - Right
 - Front
 - Center (Front/Back)
 - Back
 - Bottom
 - Center (Elevation)
 - Top



Insertion / Origin Point

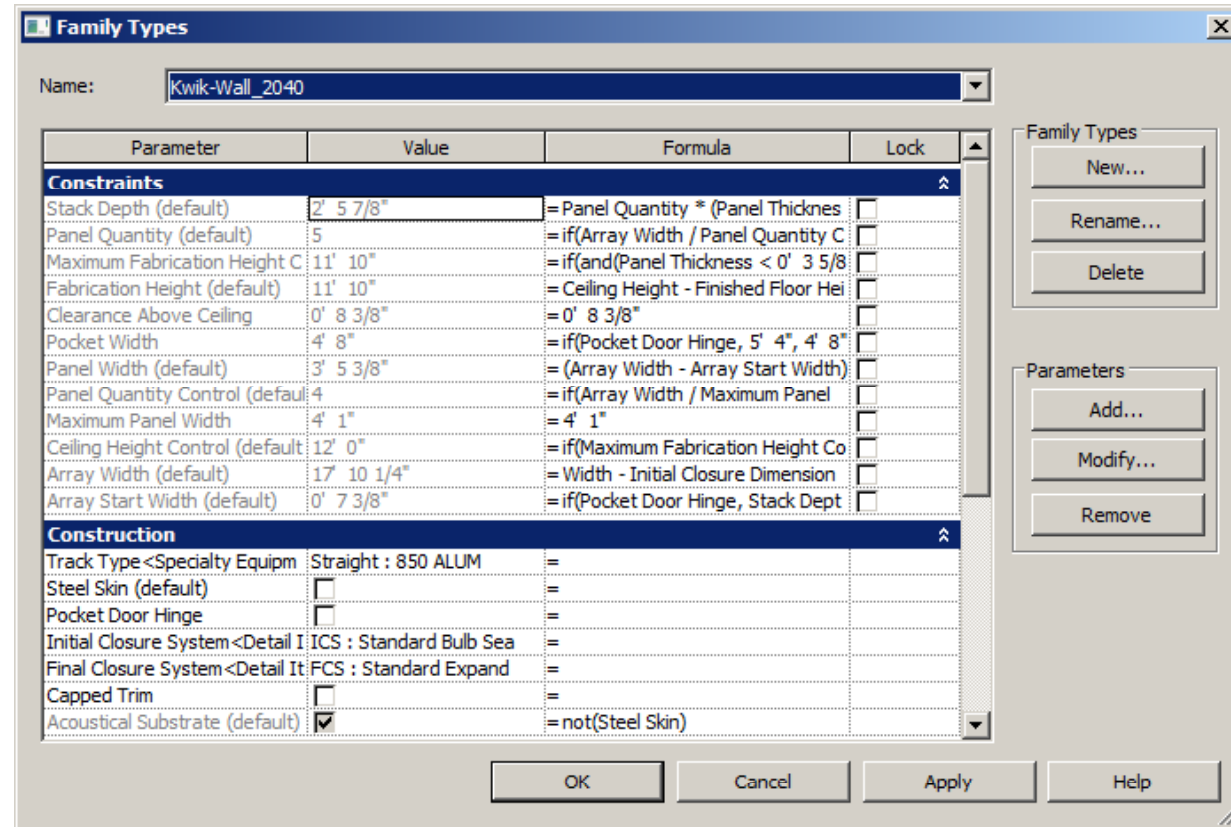
- The **insertion/origin point** is the point at which you want to place the family in a project (indicated by the cursor position).
- The insertion point location is influenced by how the family will be used. For example, the insertion point for windows and doors may be the "center" of the geometry, so that the content parametrically expands from the center out. For a countertop, the insertion point may be set at a corner, so the content expands with the instance length in one direction.
- Determining the appropriate insertion point will help users place the family in a project.



Parameters

- Define family type variations by specifying different **parameters**.
- Build only the parametric family behavior that you need, in order to avoid over-constraining the model.
- **"Flex"** the "skeleton" to test the relationships before you add geometry.
 - Change values
 - Press "Apply"
 - Verify results
- **Instance parameters vs. Type parameters**

"(**default**)" indicates an Instance parameter



Parameters

- CSI (Construction Specifications Institute) classification codes. For more information on the standards, refer to the CSI Web site, http://www.csinet.org/s_csi/index.asp
 - **Keynote:** MasterFormat 2004
 - **Assembly Code:** UniFormat II
 - Family Category and Parameters >
OmniClass Number: OmniClass 1.0
- Use "Title Case" for parameter names, as they are case sensitive.
- Avoid using symbols in parameter names, including:
+ - / \ * () " ' < > | ^ \$ { } []
These can be confused for operators in parameter formulas.

Parameter	Value
Identity Data	
Assembly Code	D2010810
Keynote	
Model	
Manufacturer	
Type Comments	
URL	
Description	
Assembly Description	Drinking Fountains
Type Mark	
Cost	
OmniClass Number	
OmniClass Title	

Parameter	Value
Part Type	Normal
Shared	<input type="checkbox"/>
OmniClass Number	
OmniClass Title	
Host	Wall

Parameters

Formulas

- The following are valid formula abbreviations for arithmetic operations and trigonometric functions:

Addition: +

Subtraction: -

Multiplication: *

Division: /

Exponentiation : ^ [x^y , x raised to the power of y]

e raised to an x power: exp

Logarithm: log

Square root: sqrt [sqrt(16)]

Sine: sin

Arcsine: asin

Cosine: cos

Arccosine: acos

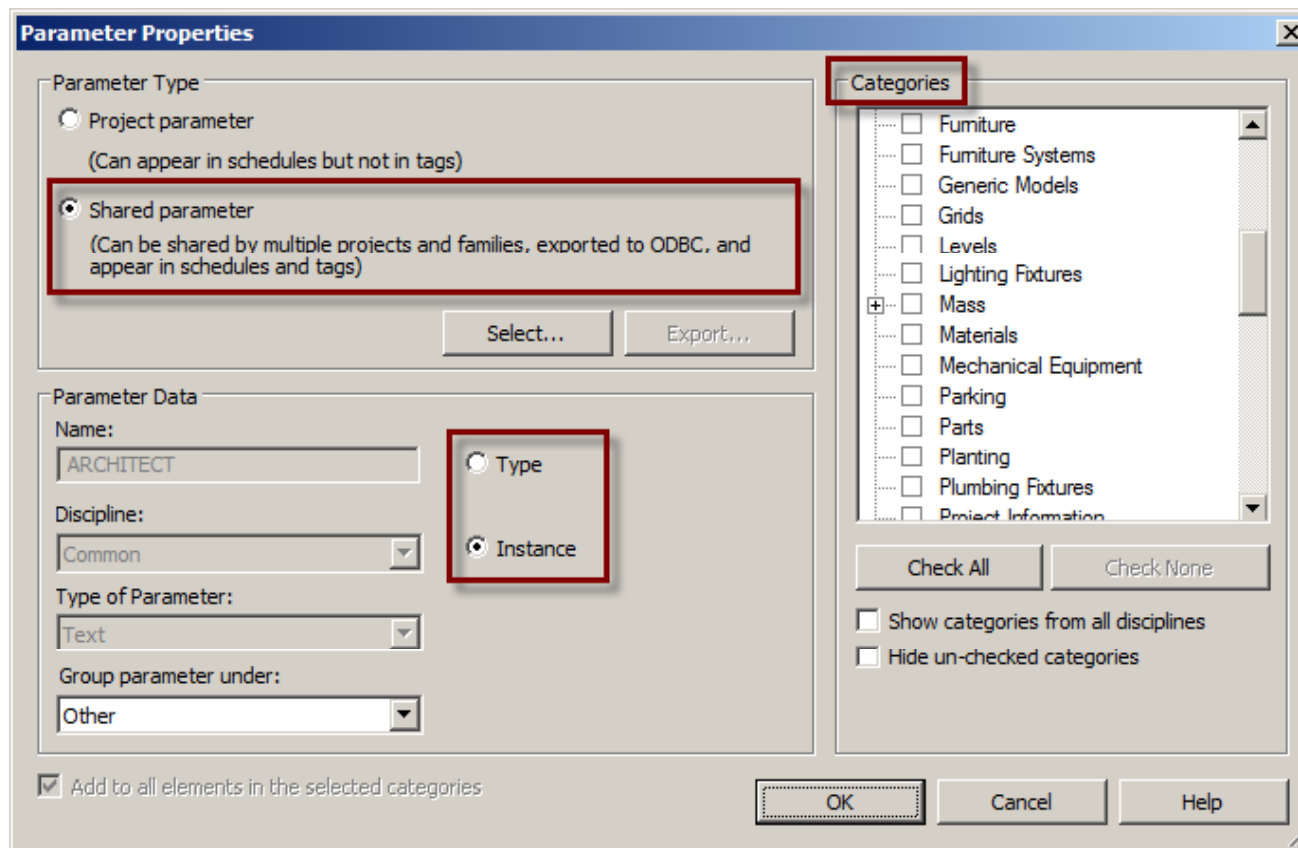
Tangent: tan

Arctangent: atan

Absolute Value: abs

Shared Parameters

- If you want to display the names and values of custom parameters in a schedule, they must be defined as **shared parameters** in a text file that is independent of family and project files.



Shared Parameters

- Refer to the master file ([Revit Master Shared Parameters.txt](#)) for the list of Autodesk-approved shared parameters. This file contains most of the shared parameters that you will need to add to your families.

```

Revit_Master_Shared_Parameters_v2_1.txt - Notepad
File Edit Format View Help
# This is a Revit shared parameter file.
# Do not edit manually.
*META VERSION MINVERSION
META 2 1
*GROUP ID NAME
GROUP 1 Dimensions
GROUP 5 Electrical
GROUP 6 Mechanical
GROUP 8 Identity Data

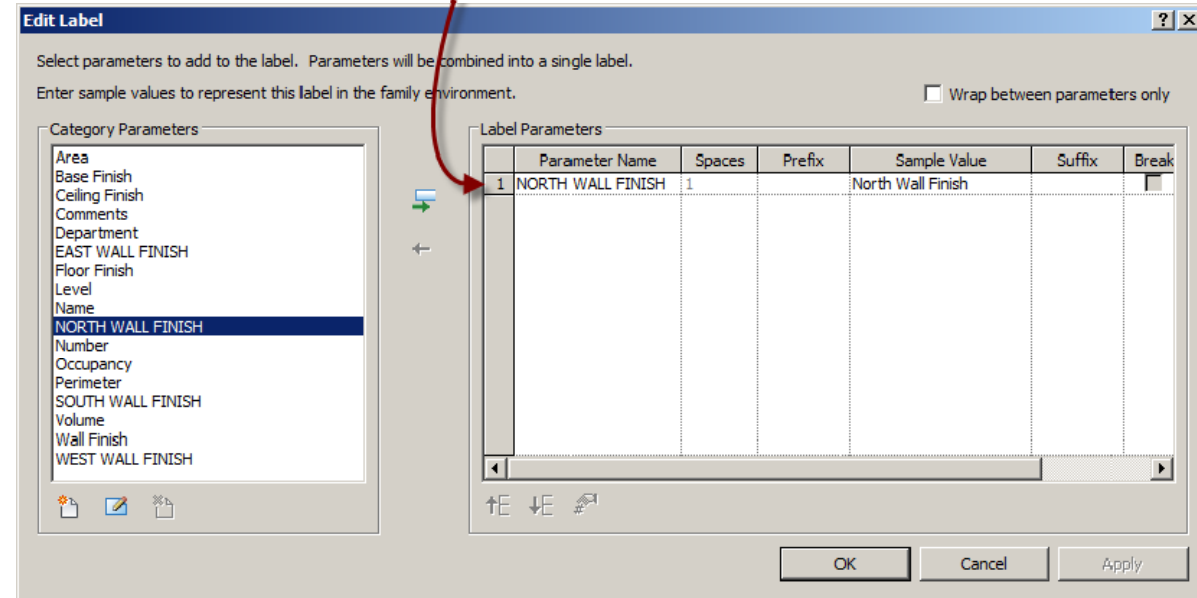
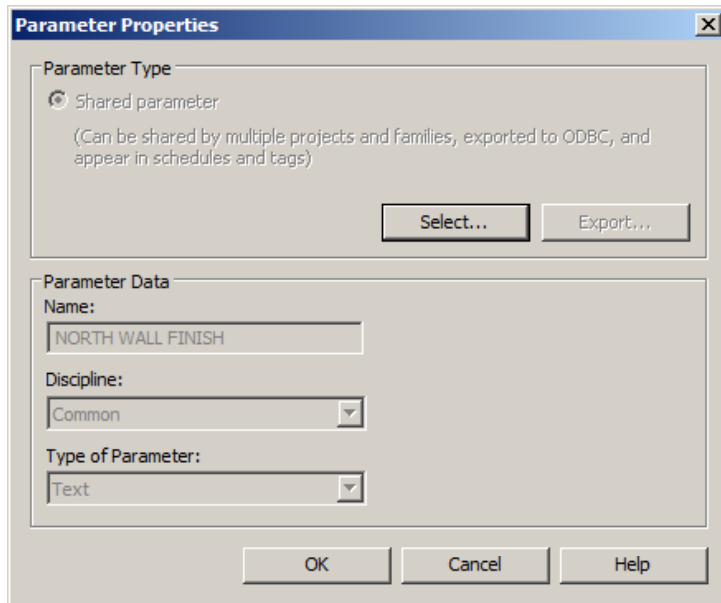
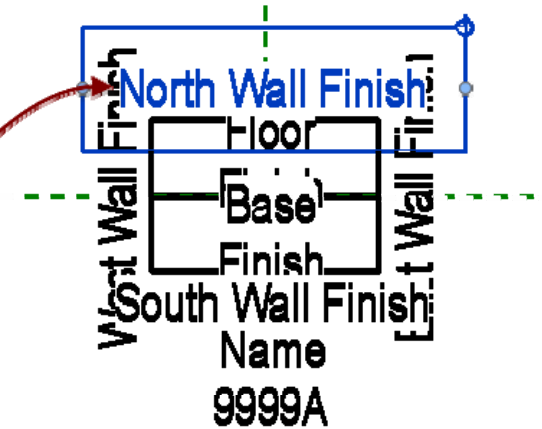
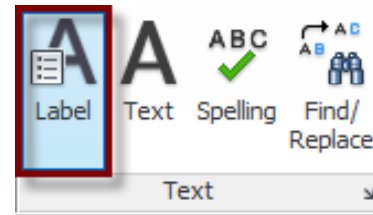
PARAM 09ca902c-74ab-4243-9a33-5522a01092e4 Actual Refrigerant 2 Flow PL _NG_FLOW 6 1
PARAM e56f2f04-58ff-4786-9d0e-977ceeea6ac5 Minimum Circuit Current ELECTRICAL_CURRENT 10 1
PARAM 6d3c6004-dce9-4ccf-9320-148946c8b5bc Heating Seasonal Performance Factor NUMBER 12 1
PARAM 137c6e04-d89d-469f-9fa9-b926e1d1104a Actual Exhaust Air Flow HVAC_AIR_FLOW 11 1
PARAM 987ca005-e391-496b-8440-338a8ef9dff8 Economizer YESNO 6 1
PARAM 24452f06-fde6-42b5-8cd5-8d44e579f382 Coefficient of Performance NUMBER 12 1
PARAM cda9df06-7a58-4c1f-820f-264a9d5af216 Serial Number TEXT 8 1
PARAM d449ed06-9ce0-425b-9f6c-a75630dafad0 Equivalent Direct Radiation AREA 6 1
    
```

- A spreadsheet ([Revit Master Parameter List.xls](#)) that lists these parameters by family category, along with applicable predefined system parameters is also available for reference.

Category	Part Type	Parameter Name	Parameter Group	Parameter Type	GUID	Discipline	Type Of Param	Comments	Sample Input	Feedback
Doors		Rough Height	Dimensions	System						
		Rough Width	Dimensions	System						
		Height	Dimensions	System						
		Thickness	Dimensions	System						
		Width	Dimensions	System						
		Air Leakage	Energy Analysis	Shared Parameter	645ac6e8-f7ee-4e69-bab7-44581d144d3e	Common	Number		0.07	
		R Value	Energy Analysis	Shared Parameter	1f3cbaba-0477-483e-406e-c33df7f553cc	Common	Number		2.13	
		U Value	Energy Analysis	Shared Parameter	76c3739a-4466-4336-b343-b0435c8f77c	Common	Number		0.47	
		Solar Heat Gain Coefficient	Energy Analysis	Shared Parameter	d75c5244-58b1-4b0b-b833-934d89084c	Common	Number		0.53	
		Visible Light Transmission	Energy Analysis	Shared Parameter	9a634fbd-fa84-4967-945a-4c1f5c25003c	Common	Number		0.54	
		Energy Star	Green Building Prop	Shared Parameter	2931b0fd-1d30-4460-a431-73228a6900	Common	Text	Energy Star Zone		N, NC, SC, S
		LEED Credit	Green Building Prop	Shared Parameter	14a45813-1981-4853-a05c-0c553b8bc531	Common	Text			EQ Credit 6.2

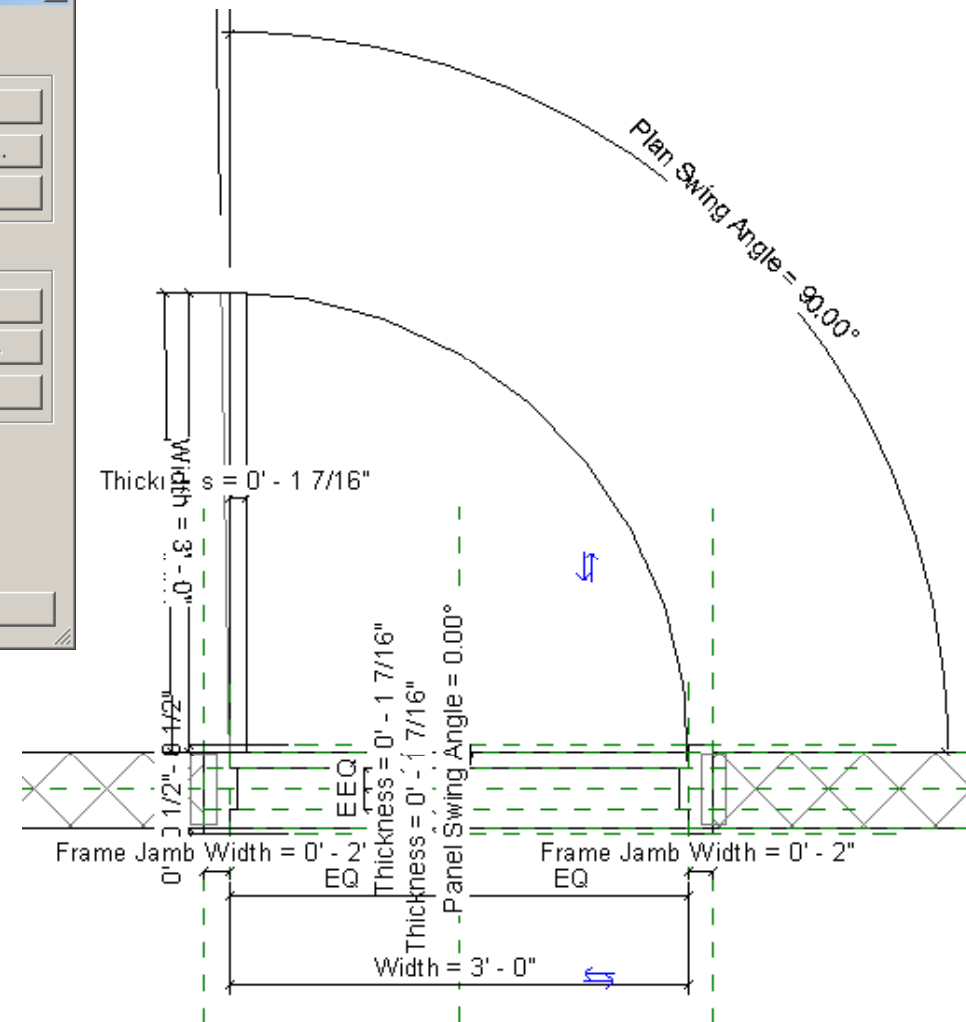
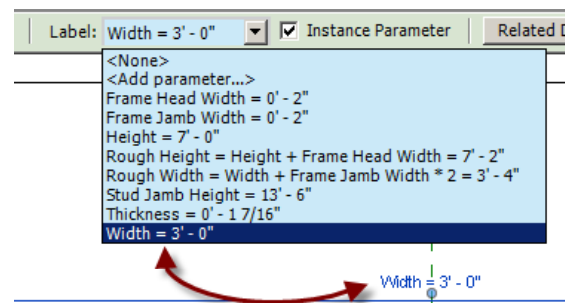
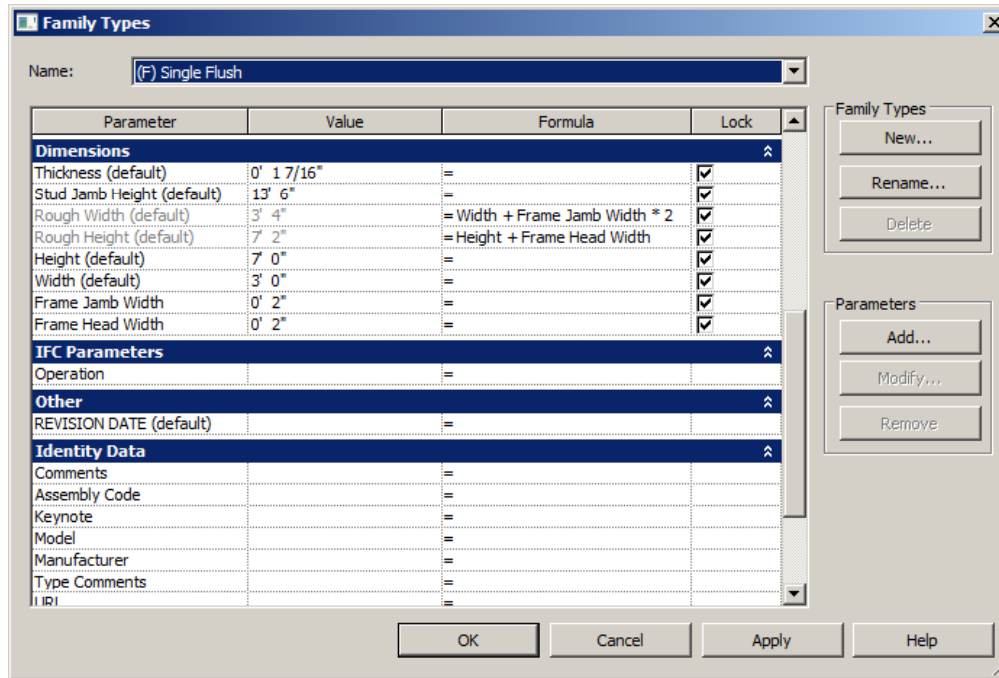
Labels / Tags

- Labels are used for creating Annotation families (Tags)
- Shared Parameters must be used.
- Tags do not "contain" the data, they merely "report" it from the tagged element.



Labels / Tags

- Labels are used for controlling parametric functionality.

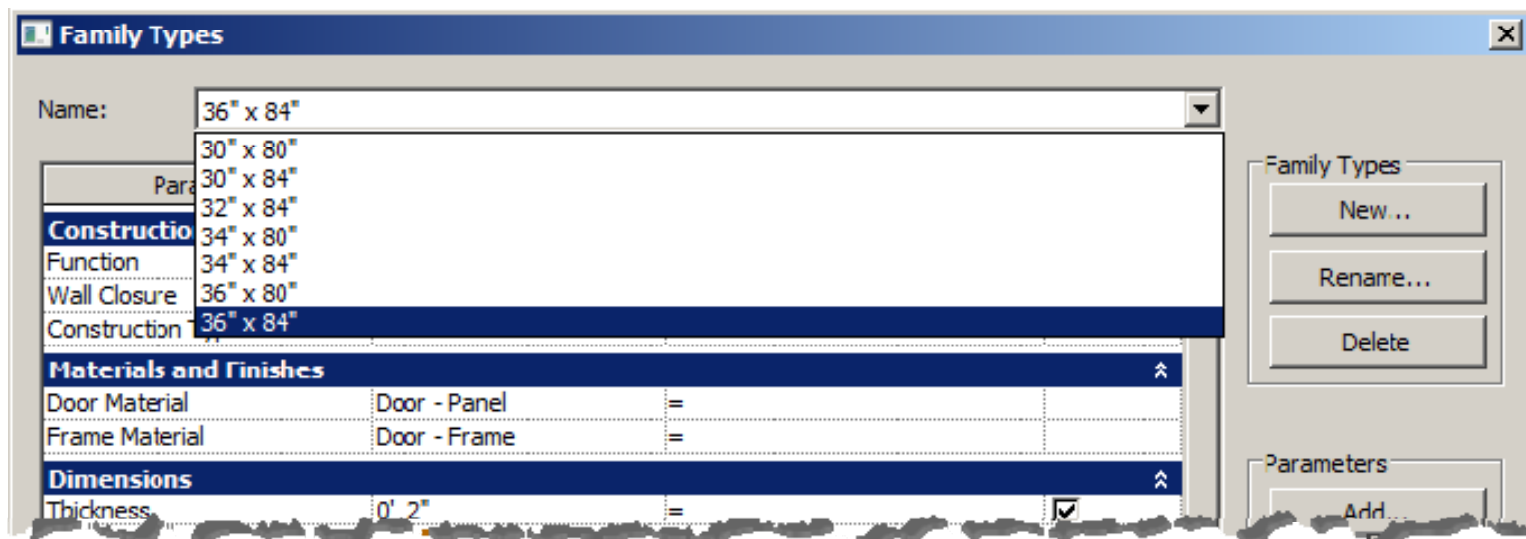


Materials

- Materials can be applied to families to depict the real-world display of elements created with the family in shaded and rendered views.
- Depending on the type of material, a finish material name may include a color, code, finish type, or identification number.
- Acceptable file formats for material images include:
bmp, jpg, jpeg and png
- Materials increase the family size, which in turn decreases its performance when it is loaded and used in projects.
- If possible, use the materials that are available in the Revit software when assigning materials to family geometry.

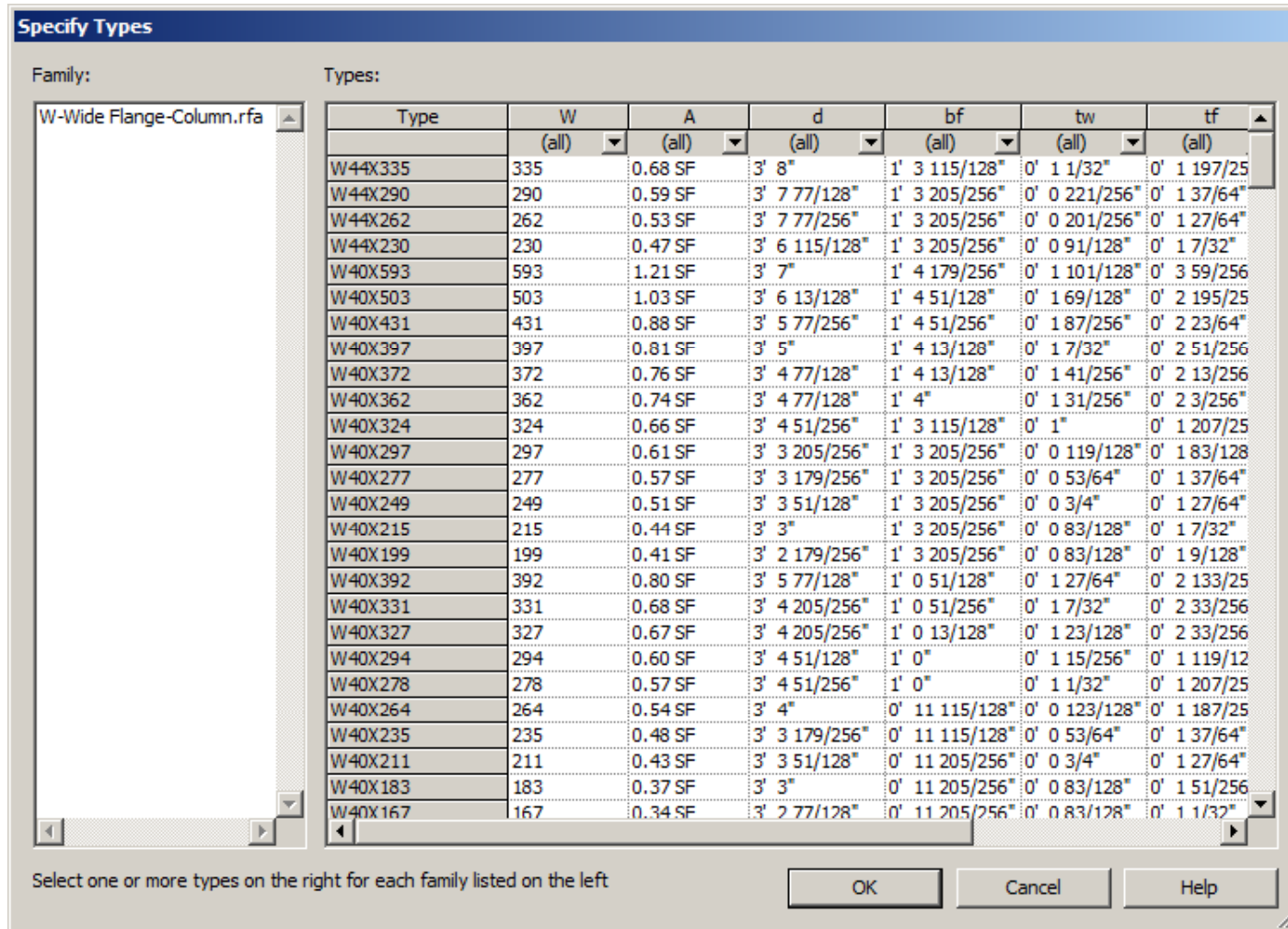
Family Types (aka "Types")

- All families must include one predefined type.
- Other types can be added as required.



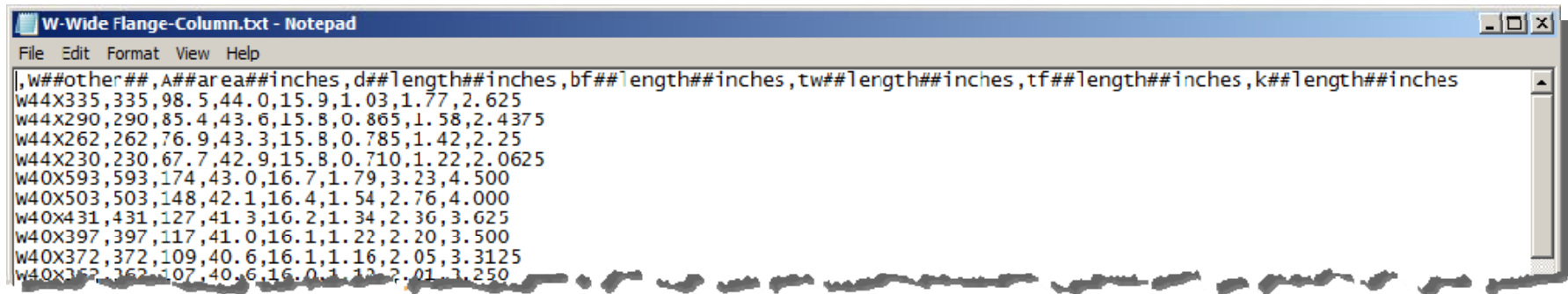
Type Catalogs

- Create a "Type Catalogs" for a family that contain 6 or more Types.

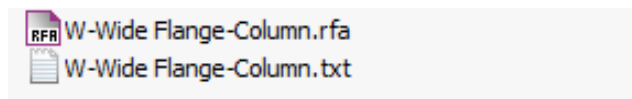


Type Catalogs

- A Type Catalog is comma-delimited TXT file (.CSV). When placed in the same directory as a family, the Type Catalog displays a list of selectable Family Types before the family is loaded into a project.



- The filename of a Type Catalog file (.txt) must exactly match the filename of the associated family file (.rfa) that it supports (except for the extension).



408 KB Revit Family
14 KB Text Document

Nesting Families

- A nested family is one that has been loaded into another family. In some cases, it can be convenient to represent parts of the nested family separately from the main family model. For example, you could create a windowsill family and nest it in a window family. This allows you to build upon previous work while creating families suited to your needs.
- Limit nesting to two (2) levels
- Nested families can be shared or not shared.

Connectors

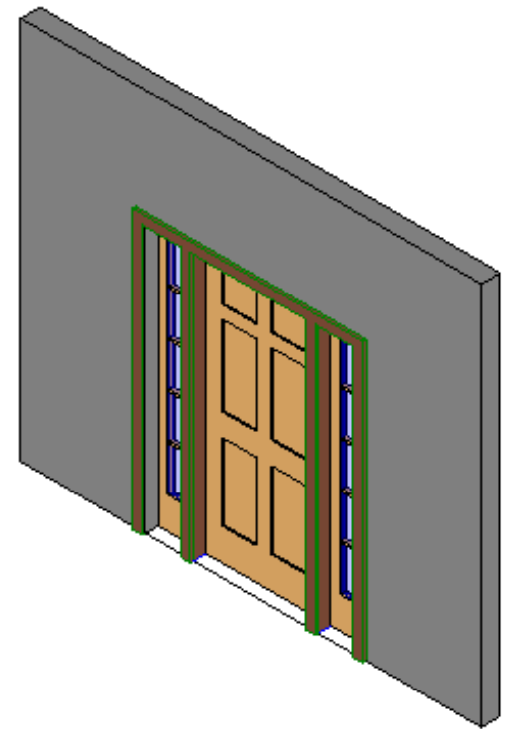
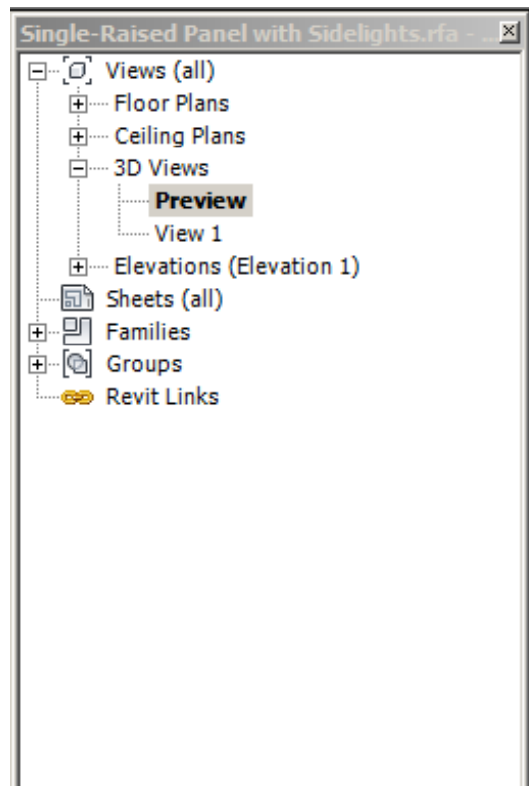
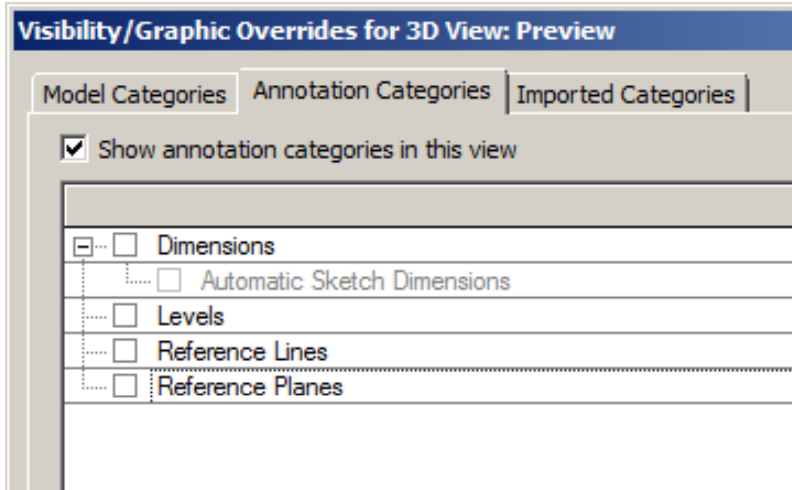
- Creating intelligent connectors
- In Revit MEP, there are 3 kinds of connectors:
 - Electrical Connector
 - Duct Connector
 - Pipe Connector
- Best Practice: Place connectors on a face rather than on a work plane.
- By default, the first connector in each domain is assigned as the primary connector.
- Linking connectors on equipment makes it possible to propagate engineering data, allowing you to use equipment as an inline component in a system.

Importing Geometry

- It is possible to import geometry from other applications
 - .DWG (Autodesk AutoCAD format)
 - .DXF (AutoCAD Drawing Interchange Format)
 - .SAT (Spatial Corporation Standard ACIS format)
 - .SKP (Google SketchUp Model format)
- When importing geometry from other CAD formats, for optimal results and integral family functionality, it is recommended that the imported geometry is used as a guide for family creation, not as the family geometry itself.

Preview Images

- Create a dedicated view to use as the preview image. In the Project Browser, name the view as "Preview".
- Turn off visibility of dimensions and reference planes/lines and if necessary, set the host visibility.

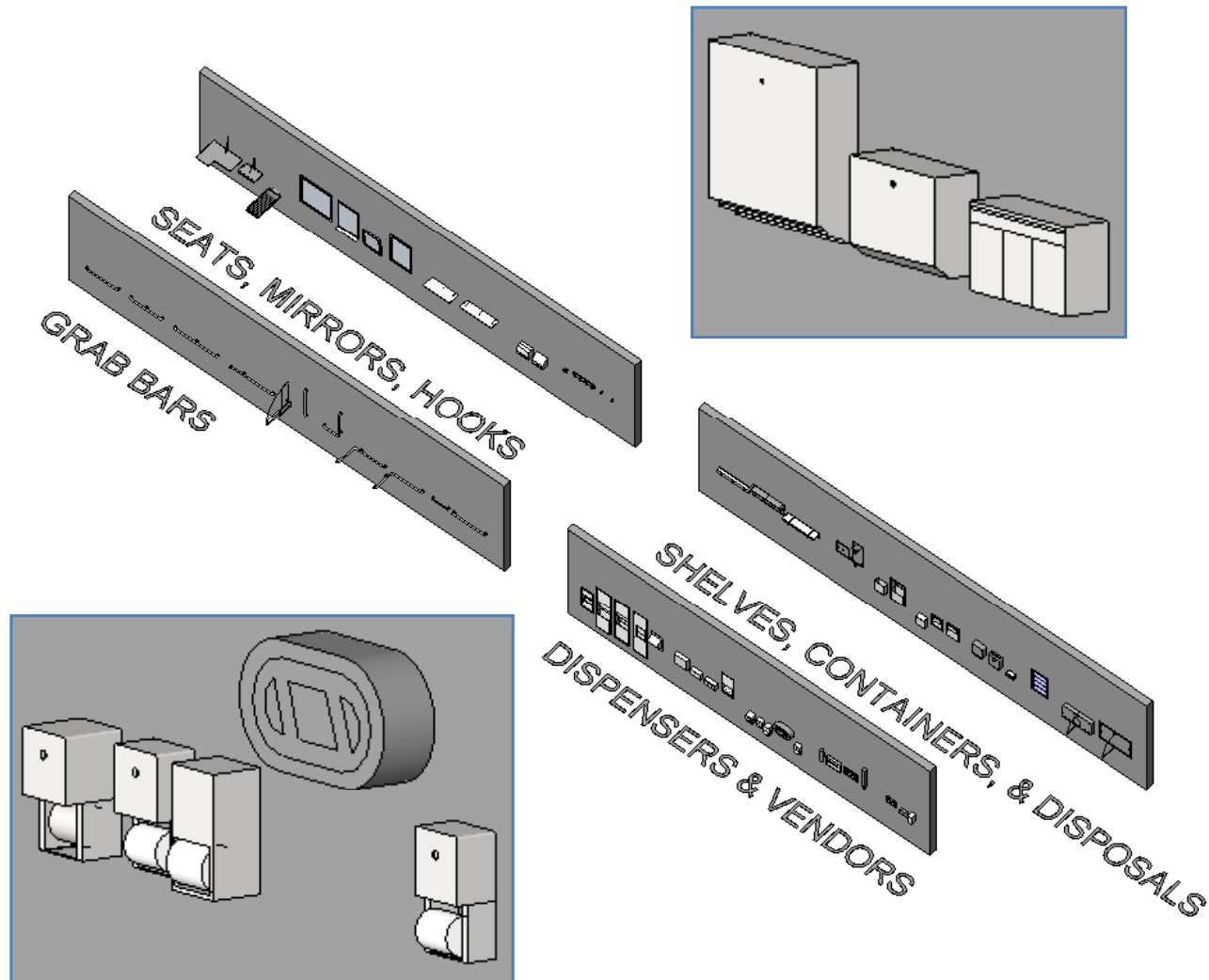


Organizing Families

Libraries and Templates

- Library files (.rvt)
 - Cabinets
 - Doors
 - Equipment
 - Plumbing Fixtures
 - Toilet Accessories

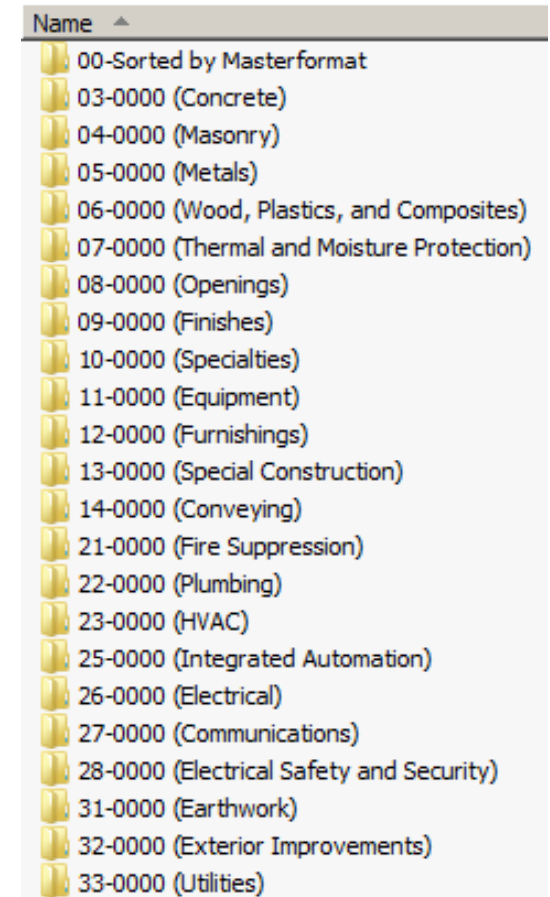
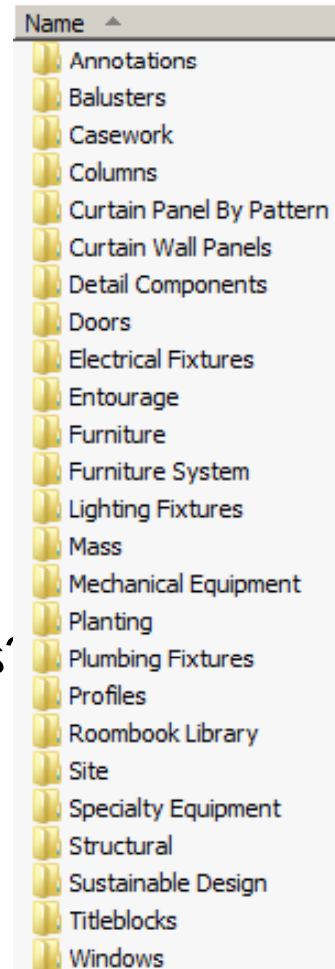
- Simply copy-paste families from the library into the project file.



Organizing Families

Folders

- Folders of family files (.rfa)
- Organized by CSI Format, or by Revit Category.
- How do you organize your families'



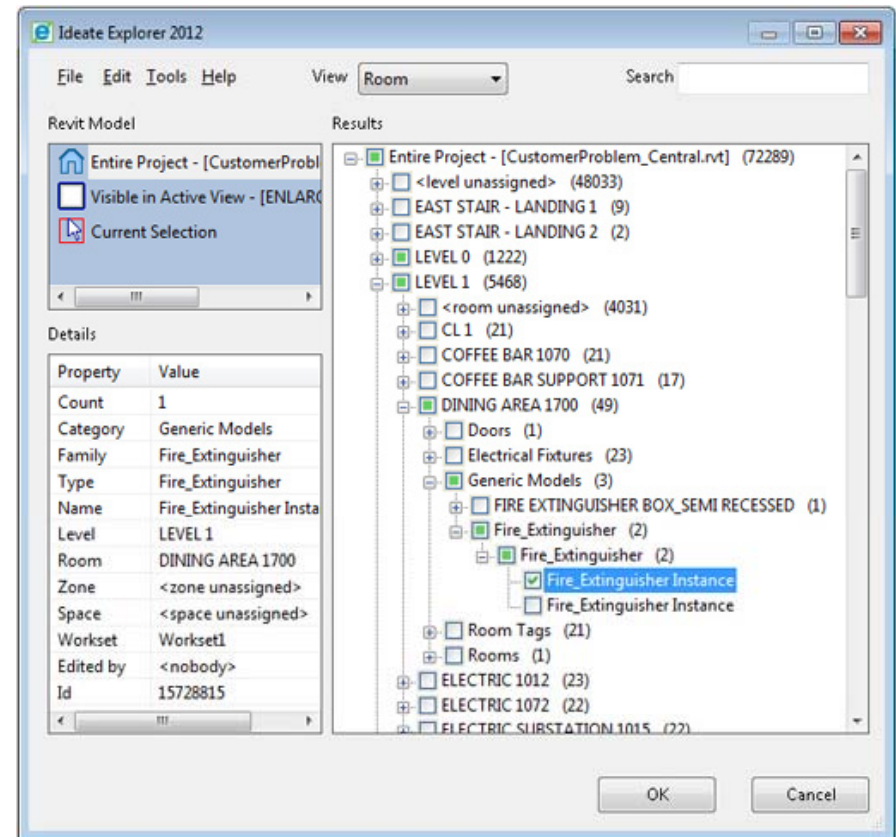
Organizing Families

Extensions, Add-ins, Apps

- There are also several applications available to help manage families.
- What's your favorite?

Here is just a small sampling.

- <http://ideateexplorer.com/>
- http://www.smartbim.com/smartbim_library_manager.htm
- *Kiwi Codes Solution Revit Family Browser*
- http://www.revitapp.com/en-us/easy_family_loader.html
- *IMAGINiT Utilities for Revit 2012 - Revit Content Browser*



Resources

Houston Area Revit User Group

- Website: <http://www.harug.org/>
- Wordpress: <http://hrug.wordpress.com/>
- LinkedIn: <http://www.linkedin.com/groups/HARUG-Houston-Area-Revit-User-4219503>
- Facebook: <http://www.facebook.com/groups/harug/>

Autodesk

- *Revit Architecture 2010 Families Guide*, Autodesk, June 2009.
<http://www.autodesk.com/revitarchitecture-familiesguide>
- *Revit Model Content Style Guide*, Version 2.1, Autodesk, December 2009.
<http://seek.autodesk.com/MarketingSolutionsRevitStyleGuide.htm>
<http://seek.autodesk.com/revit.htm>

The Full package can be downloaded from the Autodesk Seek site.

Go over some guidelines and standards in case someone may want to post their families on Autodesk Seek.

(Designed for manufacturers and what not but we can probably learn from it as well).

Resources

Autodesk Blogs

<http://usa.autodesk.com/adsk/servlet/index?siteID=123112&id=4805213>

<http://insidethefactory.typepad.com/>

<http://bimandbeam.typepad.com/>

<http://inside-the-system.typepad.com/>

<http://revitclinic.typepad.com/>

<http://thesustainabledesigntoolbox.typepad.com/>

<http://doddsandends.typepad.com/blog/>

Autodesk University

<http://au.autodesk.com/>

Various sessions



QUESTIONS and COMMENTS

This concludes today's
HOUSTON AREA REVIT USER GROUP
presentation

Thanks for coming!